



Mathews & Associates Architects cc is styled on the atelier / studio design model. We are an "ideas" firm, specialising in landmark and iconic buildings while supporting our creative flair with an uncompromising attention to detailing, documentation and administrative professionalism.

Visit our website for a testimonial of our work, awards, television interviews and publications. www.maaa.co.za



Mathews and Associates Architects cc, the award winning architectural and design practice, was formed in November 2000. Our practice consists of Pieter J Mathews and associate Liam Purnell and head of technical department, Anton Smit. As a dynamic and innovative company we understand the importance of technology, therefore our office is fully equipped with the latest graphics and architectural 3D software on the market. Our numerous awards bear testimony to our skills and talent. Herewith a list of projects undertaken by the professional staff in their current and previous employment capacities.

MATHEWS AND ASSOCIATES ARCHITECTS 2000: Currently

- Art Galleries**
- University of Pretoria Museum & Art Complex UP Javett - Expected completion date 2018
 - Gerard Sekoto wing for the Association of Arts Pretoria - Concept and sketch plans only
- Art Curation**
- Curators for the TRT bus station public art + sculpture component, Commissioning of 51 Artworks for 51 stations
 - Implementation agent for the Cool Capital 2014 & 2016 Biennale
 - Curators for the 2016 official South African Pavillion at the Venice Biennale
- Airports**
- Mthatha airport refurbishment. Department of Environment and Tourism. Concept and sketch plans only
- Bridge Design**
- Nellmapius bridge, Gateway to the Gauteng Freeway Improvement project - 2011
 - Musina Ring Road Signature Bridge, Limpopo Province - Expected completion date 2018
 - UJ bridge facade competition - one of 5 designers invited 2014
 - University of Pretoria Javett - UP bridge as part of gallery over Lynnwood - Expected completion date 2018
 - 2016 Invited to design signature bridge over K60 by Gauteng Government and MDA.
 - 2016 Bridge design for Total South Africa. New Panorama bridge concept
 - 2016 Bridge for the Rainbow Junction Intermodal facility, Pretoria North- Expected completion date 2019
 - Total South Africa- New Road Bridge concept 2017
- Biennale & Exhibitions**
- 2012 Traces of Centuries & future step - Venice Architectural Biennale
 - 2014 Implementation agent for the Cool Capital Biennale BASA award & Loerie Ubuntu finalist
 - 2016 Official Curators for the South African Pavillion at the Venice Biennale
 - 2016, 2017 Implementation agents for *Saadjies* sculpture projects exhibited at UP Van Wouw museum, Artklop Potchefstroom, NWU gallery, MAP Richmond, UJ and the University of Stellenbosch
- Commercial**
- NTT Toyota dealership Groblersdal - 2008
 - NTT Toyota dealership Whiteriver - 2008
 - NTT Toyota dealership Vryheid - Completed in 2011
 - NTT Hazyview - Completed in 2012
 - NTT Delmas, Barbeton & NTT Nissan, Ladysmith - 2014
 - Total South Africa NewRoad redevelopment (concept)
- Education**
- Damelin Campus Rustenburg - 2006
 - Laerskool Pretoria Oos - After care centre - 2009
 - Laerskool Pretoria Oos - Phase 2 – Sport centre - 2010
 - Afrikaanse Hoër Meisieskool Pretoria EC Steijn Hall - 2012
 - Afrikaanse Hoër Meisieskool Pretoria New Sport Club house - 2012
 - Hoërskool Waterkloof New Student Residence & Hub - 2013
 - PBHS invited as one of 5 architects for Architectural competition in 2013 for extension of school Hall
 - New music centre for Afrikaanse Hoër Seunskool - 2015

- New pavilion and swimming pool for AHMP - Completion date 2017
- New Student centre and aftercare for AHMP - Completion date 2017
- University of Pretoria Javett: UP arts -Expected completion 2018

Film

- Dorpsstad 2015 executive producers for documentary for filmmakers ENABA TV (International film festivals scenecs and Amsterdam lift-off Netherlands)
- 2016 Cool Capital Trek a documentary shot in Venice
- Saadjies preproduction 2016- to be released in 2017

Group housing

- Impala Village New 2000 unit residential village for Impala Platinum Rustenburg - Phase 1 - completed in 2013 Phase 2, 2016
- Magnolia Ridge Rustenburg - Phase 2
- Impala Burgersfort Sketch design
- Arnokon - 2000
- Jan Smit Bouers - 2003 Shavu Estate
- Bondsure Consulting - 2003 and 2004
- One of 10 national architectural firms to be invited for the Melrose Arch residential competition - 2002
- One of five Pretoria architectural firms short-listed for the UP residential schemes - Tuks Village and Onderstepoort -student residence (invitation only)
- Royal Bafokeng Platinum Housing expected completion date 2018 (Double D + G) 1200 houses

Heritage projects & applications

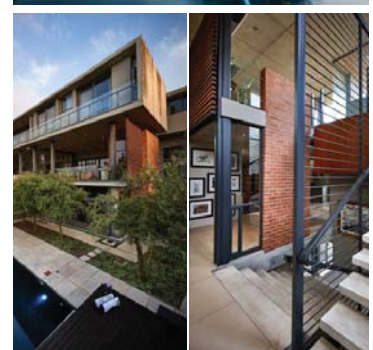
- Church Square vertical element PHRAG application
- Javett: UP Arts Centre PHRAG application

Housing

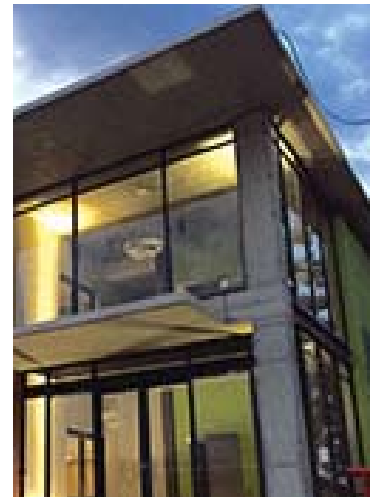
- Range of upmarket residential houses
- Award: PIA Merit Award in 2005 for House Millar, SAIA Merit Award 2006
- PIA Merit Award in 2013 for House Fouché, House & Leisure House of the Month
- House Mathews, House Millar and House Clacey was selected for the 2005 Miami Biennial in Florida, USA.
- House Nixon, Dulux Colour award finalist
- Numerous upmarket houses for clients such as:
Angus Taylor - sculptor 2008 PIA commendation
House Oosthuizen 2008 PIA commendation
Nataniel - entertainer 2004
Pieter Cilliers - television producer (JV CC architects)

Hotels & hospitality

- Fusion Boutique Hotel, Polokwane 2009 (LIA Commendation 2011 - World Boutique Hotel Award)
- Mjejane Reserve tented camp and Spa (concept design only)
- Invited by Rani, a Dubai based company to do a proposal for Santa Carolina Island off the coast of Mozambique.
- New Brauhaus Brewery & Restaurant complex Rustenburg - Completed in 2011
- Phase 2 Atholl Boutique Hotel (Concept design & sketch plans only)
- Craginear Lodge, Tuliblock Botswana (Concept design & sketch plans only)



- Hotel Madelaine Heritage + New conference facility expected completion date 2017
- Industrial**
- HQ Vitam International. Midrand - 2007
 - Mashova head quarters, Maputo Mozambique - 2010
 - New Petrol Depot & offices for MBT Petroleum Pretoria East (sketch design only) - 2012
- Interior and Tenant Installation**
- Runner-up in association with Tulo Concepts for the MTN Head Office Interior - 2003
 - Rebos TI Brooklyn Mall Pretoria - 2004
 - Brink Bonsma De Bruyn - 2008, Second office - 2011
 - Enjula mining Company - 2008
 - International Monetary Fund, IMF Pretoria - 2010
- Mining**
- Impala Platinum (Pty) Ltd Magareng Hostel Upgrade, Rustenburg - 2011
 - New office for Samquarz Mine Delmas, Mpumalanga Completion date 2011
- Medical**
- 2016 New Rustenburg Eye Hospital
- Nuclear Power Station**
- Competition 1000 KVA Nuclear plant for World Nuclear magazine, London - 2010
- Office buildings**
- New HQ for the North West Provincial Government Department of Public Works (Sketch design only)
 - SARS regional head office, Rustenburg - 2006
 - EDE farming head office, Middelburg - 2006
 - Kee Enterprises (Pty) (Ltd) Pretoria - 2008 (PIA Peers Award first place 2009) (Design Indaba South: only architectural finalist) (PIA Commendation 2009)
 - Arengo RTB Rustenburg Retail & Office space - under construction
 - Menlyn Maine block F Menlyn Pretoria. Concept Architects for Nedbank regional head office in JV with Boogertman + Partners - Completed in 2012
 - Temm International HQ - Completed in 2013
 - New Mathews & Associates office - Completed in 2016
- Sport**
- 2017 New FINA compliant swimming pool and grand stand for AHMP
- Toll plaza**
- Baobab Toll Plaza on the N1 between Louis Trichardt and Musina – 2003 Award: PIA Merit Award; SAIA Merit Award 2006
 - Diamond Hill Toll Plaza on the N4 between Pretoria and Bronkhorstspuit – 2004 Award: PIA Merit Award in 2005; SAIA Merit Award 2006, SA Steel Institute 2005: Overall National Winner.
- Transport Architecture**
- Winners of 2 of the 4 station types for the Tshwane Bus Rapid Transport System (18 prominent architects were invited for a national design competition 2009)
 - Memory Box - Completed 2014 (line 2A) 2015 (line 1A) Church Square & old synagogue- Completed in 2016
 - New Model Taxi rank for the City of Johannesburg, JRA - 2011
 - New Intermodal facility for Rainbow Junction - Expected completion date 2018
 - Temporary TRT prototype for Rainbow Junction- Expected completion date 2017.



Graphic Design

- CI for Ponta Mamoli, Mozambique
- Kratonic Minerals
- CI for Jaluma 2012, Marlinec 2012, Knowblet 2012,
- Dutch Footsteps for the Embassy of the Netherlands 2014 (Logo and Website Design)
- Plascon, PPC advertising design 2015 Cool Capital Catalogue

Furniture Design

- 2012 Southern Guild Foundation - Interlocking Bench
- 2013 Southern Guild Foundation - Celebrated Joint Bench
- 2014 PPC Bench design, Cool Capital logo at Gautrain Station in association with Sunshine Gun
- 2014 PPC Koeksister Bench for the Voortrekker Monument
- 2014 Afrika Zen Chair for Detail Joiners exhibited at NWU & UJ & PAUL BAYLIS
- 2016 PPC Mandela bench for Cool Capital placed at Rivonia Trial Station

Urban Activation

- Cool Capital Biennale 2014: Implementation agent for the worlds first uncurated DIY Guerilla Biennale, 29 August 2014 - 16 November 2014
- TICRS Tshwane Inner City rejuvenation strategy for the City of Tshwane 2014 - 2015 branding and marketing of the innercity projects in association with Metroplan.
- Cool Capital 2016 Biennale: Implementation agent
- 2016 Saadjies project supported by DAC Mzansi project





principal



PIETER J MATHEWS

Pieter J Mathews was born on 24 February 1967 in Lichtenburg in the North West Province as the 4th of five children. He matriculated as head boy from Lichtenburg High School in 1985 and obtained academic colours every year. He obtained his BArch Degree in 1991 at the University of Pretoria, receiving the prestigious Goldfields of SA Scholarship for Architecture, the David Haddon Prize for Office Practice as well as a second place in the Portnet SA Richard's Bay Harbour Development Competition. He also obtained distinctions for design in his second, third and fourth years. He is married, with 2 boys. Student publications: Architecture SA May/June 1990. Author: Architecture, published by Visual Books in August 2003, which received the Pretoria Institute for Architecture Presidents Award. In 2007 Detail Housed followed. He was publishing editor for Construction Primer by Hans Wegelin.

In 2010 he was commissioned by the PIA to edit Contemporary Capital. In 2011 he was elected as president of the PIA and was simultaneously appointed Architectural Editor for DeKat Magazine. In 2010 Decade of Design celebrating the work of the past decade of MAAA was published with an essay by Diane de Beer, respected journalist of the Pretoria News. He was elected President of the Pretoria Institute for Architecture in 2012, for a 2 year term, and became a SAIA board member in 2012 until 2013. He is also the convener of Cool Capital Biennale 2014 for which he received the PIA President's award 2014 and again in 2015 with Carla Taljaard. In 2016 He was appointed as curator for the South African Pavilion at the Venice Biennale and gave a TEDx Pretoria talk on the Cool Capital initiative.

CAREER

In 1989 he completed part of his practical training in London (Bruce Gillbreth & Triad Architects) after which he travelled the globe extensively. His travels included Europe, USA (New York and California), Thailand, Hong Kong and Turkey. At Bruce Gillbreth he was involved with the Centre at Capability Green in Luton and at Triad Architects, Frimley High Street office building as well as a residential project for the government of Gibraltar.

After completing his studies in 1991 he was invited by Prof Dr Dieter Holm (the former head of Architecture at the University of Pretoria) to join their practice: Holm, Jordaan, Holm. At the end of 1994 he was offered a partnership at Nel Storm Architects in Pretoria. With Jacques Gerber as partner they formed Mathews and Gerber Architects from December 1995 to November 2000. Mathews and Associated Architects was formed in November 2000, which since then received numerous accolades and media coverage.

He is also a partner in MG Design Box, an interior design emporium where young creative talent is encouraged. The emporium has received extensive media coverage and is aimed at extending design further than architecture. He founded Visual Books in 2003 when he recognized the need for an architectural publishing company in South Africa.

In September 2000 he formed part of a study tour to Spain and Morocco, as well as in 2005 to London and Paris, in which year he also attended the Sao Paulo Bienal in Brazil; Amsterdam and Italy followed in 2007. In 2013 he formed part of a study tour to visit museums and galleries in the USA, organised by the Andrew W Mellon Foundation University Museums visited included YALE, NYU, Princeton, Penn, Rutgers, Galleries included the Metropolitan, MOMA and the Guggenheim.

He acts as external examiner for UFS(thesis), UP(thesis) 2008, 2009, 2010 and TUT (3rd year) 2008, 2009, 2010, 2012, 2013, 2015, 2016. Invited in 2014 as member of "Die Akademie vir Wetenskap en Kuns"



PIETER J MATHEWS

(continued)

TELEVISION INTERVIEWS

- 1999 SABC 2: Art and architecture exhibition Bramley
- 2000 DSTV Kyknet, Kunskafee: House Mathews and House Combrink
- 2001 SABC 2 Top Billing: House Clacey
- 2001 DSTV Kyknet, Kunskafee: MG Design Box Interior Design Emporium
- 2001 DSTV Kyknet Milieu: House Nixon
- 2001 DSTV Kyknet Milieu: presenter of plaster techniques for Lafarge cement
- 2002 SABC 2 Pasella: The use of wood in architecture
- 2002 SABC 2 Top Billing: House Pelsler
- 2002 SABC 2 Pasella: Various houses
- 2003 SABC 3 Top Billing: House Richards
- 2003 DSTV Summit TV: Architecture publication
- 2004 SABC 3 Top Billing: House Pietersen
- 2004 SABC 2 Pasella: House Van Der Westhuizen and House Meintjies
- 2005 DSTV The Home Channel: South African architecture. Various Projects
- 2005 DSTV Kyknet Dekor: House Mathews
- 2006 DSTV Kyknet Dekor: House Bruyns
- 2006 DSTV The Home Channel African Living: House Nieuwoudt
- 2006 DSTV Kyknet Dekor : House Bothma
- 2006 DSTV Kyknet Dekor : House Wessie and Riëtte
- 2006 DSTV Kyknet Dekor: House Nieuwoudt
- 2006 DSTV Kyknet Dekor: House van der Westhuizen
- 2006 SABC 2 Pasella: House Pienaar and House van Rooyen
- 2006 SABC 3 Top Billing: House Mathews
- 2007 DSTV Tuine en Tossels: Launch of Detail Housed
- 2007 DSTV Kyknet Kwela: Interview Detail Housed
- 2008 Weekend live: Detail Housed
- 2008 DSTV Kyknet Kwela: Interview about artwork auctioned for child welfare
- 2008 SABC Top Billing House Prinsloo
- 2009 SABC 3 Top Billing: House Malic
- 2010 RSHP Interview
- 2012 DSTV Kyknet Kwela
- Venice Biennale Nellmapius Bridge
- 2012 GWAFF ITALY - Interviews by Karlyn de Jough
- 2012 Pieter Mathews as presenter for De Kat TV on Design & Architecture
- 2014 Kyknet, Kwela - for Cool Capital
- 2014 Kyknet, Kyknuus - for Cool Capital
- 2014 Kyknet, Dagbreek TV - for Cool Capital
- 2015 DSTV Kyknet Flits: TRT artwork curator
- 2016 Radio Interviews (list found on website)

CONFERENCE TALKS AND PRESENTATIONS

- 2001 Guest speaker: National Architectural Student Congress Causeway Pretoria
- 2002 Decorex JHB: SA Garden & Home
- 2003 Guest speaker: Exclusive Books – Architecture
- 2005 Guest Speaker: Investec Private Bank, Pretoria
- 2005 Guest Speaker: Tshwane University of Technology
- 2006 The Home Show: South African Institute of Architects, Sandton Convention Centre
- 2006 Guest Speaker: Volksblad Kunstefees, Bloemfontein
- 2007 University of Pretoria: Open School Lecture
- 2007 Judge at Homemakers Fair, Johannesburg
- 2008 Judge at the annual Visi Design Indaba – Designer of the year
- 2008 Lecture at Magi Malan School of interior design
- 2008 Guest Speaker: National Architectural Student Congress Theatre of Life Bloemfontein
- 2010 School Lecture Wits - JHB
- 2010 School Lecture University of Pretoria
- 2010 Facilitated Leading Minds video conference with Andrew Tiley and Mike Davies of Rogers Stirk Harbour + Partners RSHP. Davies project architect for the Pompidou Centre in Paris and “Legion” of Honour recipient from president Sarkozy of France.
- 2011 Architecture in the public domain - CPUT
- 2012 Venice Biennale interviewed by Karlyn de Jong & Ole Bauman, Chairman of Netherland Institute for Architects
- 2013 Various lectures on Cool Capital - UP, TUT, SABS Design Institute, Ideas Conference (PIA), Open Window, Association of Arts

(continued)

- 2013 MPIA The Bridge as Civic Art
- 2013 Inauguration AHMP Hall
- 2014 Cool Capital CPD workshop - Specilink
- 2014 Commendatio for prof H Wegelin "Akademie vir Wetenskap + Kuns"
- 2014 Opening function Hoërskool Waterkloof student residence
- 2015 Talks at WHPS, Cornwill hill College
- 2015 Guest speaker IDEAS conference 2015
- 2016 AZA Conference, University of the Witwatersrand
- 2016 TEDx Pretoria
- 2016 Opening of the 4 schools art exhibition (Affies, AHMP, PBHS, Pretoria High School for Gris)

INDUSTRIAL, GRAPHIC AND FURNITURE DESIGN, ART & SCULPTURE

- 2001 Expo at Decorex for Garden & Home – Certificate of Merit Decorex
- 2003 Decorex stand for VISI – Certificate of Merit
Outdoor furniture collection- published Garden & Home
- 2003 Invited with four other prominent South African designers to design a drinks tray for Absolut Vodka
- 2005 Invited by Lafarge South Africa to design their Launch stage and space for a new product launch in Cape Town and in Durban, 2006
- 2007 French- South Africa Chamber of commerce expo at The Campus Bryanston in association with sculptor Angus Taylor for Lafarge SA
- 2008 "Make a difference". Nataniel & Emperors Palace Eye on the child project: painting to be auctioned
- 2009 Exhibited Fried Contemporary – sculpture – students exhibition
- 2010 Exhibited Arts Association in Pretoria as part of group exhibition – Architects as Artists
- 2010 Commissioned by Mashova for 3 public sculptures on the N4 Matola City.
- 2011 Form, Scrap & Order Sculpture solo exhibition at the Association of Arts Pretoria
- 2012 Southern Guild group exhibition, Everard Read Galery Rosebank, Concrete bench design
- 2013 Southern Guild opening show, MOAD Museum of African Design, Maboneng District Johannesburg - bench design
- 2014 Zen Afrika chair for Detail Joiners exhibited at NWU, UJ & Paul Baylis gallery
- 2014 PPC bench for Voortrekker Monument
- 2014 PPC bench for Gautrain
- 2014 One of five designers invited to design a bridge graphic to celebrate The University of Johannesburg 10 year existence.
- 2016 Curator for the South African Pavilion at the 2016 Venice Biennale

MATHEWS AND GERBER ARCHITECTS: 1995 – 2000

- Tennant Installation -Lucent Technologies HQ – Bryanston
- Spanish Embassy – Waterkloof, Pretoria
- Various Government Clinics – North West Province
- Head office, Sunglitz International – Hatfield, Pretoria
- Omnimed, medical and radiology unit – Pretoria North
- Pretoria North Medical 24 hour clinic – Pretoria
- Residential houses and projects – more than 61 residential houses. Most of these houses are in the Gauteng vicinity

PREVIOUS EMPLOYMENT

- Nel Storm & Vennote (P Mathews as partner) -Various schools for the Kwazulu-Natal provincial administration (Project Architect: for Shayina and Maputa Schools as well as the Ubombo circuit offices).
- Holm Jordaan Holm (P Mathews) - Design architect for various residential projects and group housing schemes. Worked closely with Prof. Dieter Holm, world renowned specialist on passive and sustainable design.
- Bruce Gillbreth Architects London (P Mathews) -The centre at Capability Green near Luton Airport/Luton UK - Design of housing project at Waterfront for US clients
- Triad Architects and planners, London (P Mathews) - Queensway Quay/Gibraltar: residential project for the Government of Gibraltar - Part of design team for an office building at 61 Frimley High Street, London.
- Van Rouendal and Bosman Architects, Lichtenburg (P Mathews in training).
Various projects for the Department of Education and Training in the North West Province.



LIAM PURNELL

(SENIOR ASSOCIATE)

Liam was born in Ton Bridge, England, as the second of four children. After completion of his schooling in Pretoria, he went to work in London for a year and backpacked extensively around Europe before returning to South Africa to study Architecture at the University of Pretoria. He received his Architecture degree cum laude and was awarded the coveted steel design award in his fifth year. He is currently a senior associate and design architect at Mathews and Associates Architects cc in Pretoria.



CAREER

In 1999 he joined Mathews and Gerber Architects to complete architect in training requirement and was invited in November 2002 to join Mathews and Associates Architects cc as design architect & senior associate.

PREVIOUS EMPLOYMENT

Mathews & Gerber - Gerber Architects (L Purnell) - Various residential projects. Internship at Mathews & Gerber architects.

ANTON SMIT

(HEAD OF TECHNICAL AND CONSTRUCTION)

Anton was born on 18 November 1975 in Springs, Gauteng, as the second of two children. He matriculated in Rustenburg, Northwest Province. He received his National diploma from the Pretoria Technikon in 1998. He was elected as one of eight students to complete the B Tech degree.

CAREER

He completed his practical training at Mathews & Gerber Architects and was invited in November 2000 to join the newly formed Mathews and Associates Architects cc as an associate to head the technical division. He excelled in furniture design and was selected as one of 24 finalists for the Glen Grant/House & Leisure Bright Young Things design competition in 2001. He successfully completed Professional Practice Exam in 2004 and was registered as a Senior Architects Technologist in 2005. He is currently Senior Technologist and heading our technical team at Mathews and Associates Architects cc.



PREVIOUS EMPLOYMENT

Van Eeden & Fourie (A Smit) - Various residential, commercial and government projects.



CARLA TALJAARD

Carla Taljaard holds a Masters degree in architecture from the University of Pretoria. She has a special interest in heritage projects and the history of Pretoria. She is the project coordinator of the Cool Capital 2014 Biennale, co-founder of the Molo Mollo outdoor cinema club and convener of the "Architecture Theory Summer School" series featuring Dr. Jean Pierre de la Porte. Carla was part of an NRF research team on resilient cities in collaboration with the University of Melbourne in 2013.



COURTENAY GERBER

Courtenay Gerber completed her BSc Arch at the University of Pretoria in 2016 with distinction.

JANNES HATTINGH

Jannes Hattingh completed his MArch (Prof) in 2016 at the University of Pretoria. Between his BScArch and his honours year he worked at Prism Architects in Polokwane, for two years, gaining valuable practical training and hands on experience. He also worked at Gary White and Associates in 2014 after which he went back to UP to complete his masters degree.

He was awarded a bursary in 2016 from the "*Akademie vir wetenskap en kunds.*"

LOCAL ARCHITECTURAL AND DECOR MAGAZINES

African Design Magazine - Issue 24 November 2016 - Arts Campus for Affies Seuns online

Architectural Conservation in Southern Africa since 1994

- Albrecht Herholdt: Additions + Alterations of AHMP Hall

Architecture SA

- May/June 1990 - Architecture in Western Transvaal
- 1994 - Architectural conservation in South Africa since 1994 100+ projects Albrecht Herholdt
- May/June 1996 - House Mathews and House Nieuwoudt
- August/September 2005 - N4 Diamond Hill and Baobab Toll Plaza
- May/June 2009 - Laerskool Pretoria Oos
- Jan/Feb 2012 - New model public transport facility
- Sep/Oct 2012 - Venice Biennale 2012
- July/ August 2015 The Memory Box: A Capital Endeavour
- May/ June 2016 Issue 79 - Composing Place, a new music centre

Architexture

- Visual Books 2003

Beeld

- Maart 2003 - Plus
- July 2005 - Plus - N4 Diamond Hill Toll Plaza
- Plus supplement 23 Junie 2007 Launch of Detail Housed
- 22 Junie 2012 - News "Origami Brug"
- 22 Augustus 2012 - Pta Firma kry opdrag in Venesie
- 5 Desember 2012 - Maak Pretoria weer jou eie
- 18 April 2013 Meisieskool spog met saal
- 16 April 2014 Nuwe Koshuis Klofie Mylpaal

Beeld (Tshwane)

- Cool Capital Bench project Wednesday 6 May 2015 "Hoe selfie die boere"
- 17 February 2016 - Affies kry nuwe musiek sentrum

Burger (Die)

- 14 February 2008 - Interview on Detail Housed

Business Day

- October 2002 - Interview

Colour (Plascon)

- 2007 - Article on colour by Andrea Vinassa

Concrete Trends

- September 2000 - House Olivier
- October 2002 - For the love of concrete
- May 2009 KEE Enterprises - an archi-sculpture

Condé Nast

House & Garden

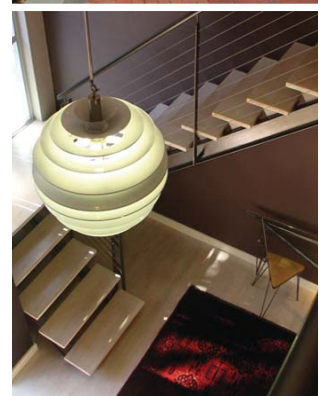
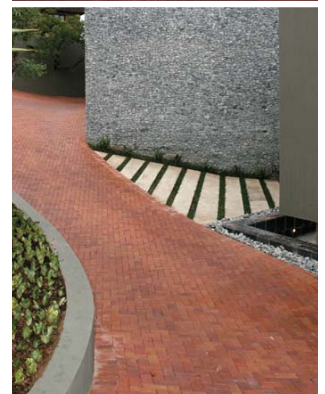
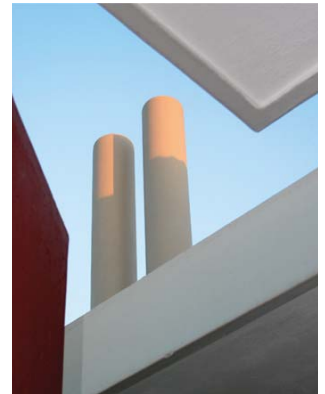
- May 2001 - Summit House and House Bruyns

Contemporary South African Architecture in a Landscape of Transition

- November 2008 - House Millar, Baobab Toll Plaza, Diamond Hill Toll Plaza

Cool Capital

- Various projects of Maaa contained in catalogue



- DEKAT**
- Februarie 1996 - House Mathews (1)
 - September 1998 - Pretoria Architects
 - Julie 1998 - House Mathews (2)
 - Spring 2002 - Article: dinksketse
 - Winter 2003 - Architexture
 - October 2007 - In finest detail
 - October 2010 Article by Pieter Mathews, selecting 25 best buildings of the last 25 years
 - July/August 2011 Laerskool Pretoria Oos
 - November/ December 2016 - Pretoria weer cool in Europa - Cool Capital
- Detail Housed**
- May 2007 Visual Books
- Die Wêreld**
- 22 May 2005 - Waarom lelik verdra?
- Designing Ways**
- Feb 2007 - Living in the Sun: House Meintjies
 - Article by Pieter J Mathews, HOA killing design (issue 118)
- Digest of South African Architecture**
- 2000 - House Mathews (2)
 - 2001 - House Combrink
 - 2005-2006 - N4 Diamond Hill Toll Plaza & Hous Millar.
 - 2006-2007 - Damelin Campus - Rustenburg
 - 2009 Kee Enterprises
 - 2009 Laerskool Pretoia Oos
 - 2013 Vol 18 New Nellmapius Bridge
 - 2013 Vol 18 Addition to existing Hall for AHMP
 - 2013 Vol 18 New Clubhouse for AHMP
 - 2016 Vol 20 Affies Seuns Music Centre
- Elle Decoration**
- Spring 2001 - House Nixon
 - Spring issue 2007 - Bathrooms
 - Spring 2009 Pieter Mathews interviewed on flooring
- Engineering News**
- August 2005 - N4 Diamond Hill Plaza
- Essentials Magazine**
- February 2004 - House Bellew
- Financial Times**
- 2016 Interview with Pieter Mathews
- Fine Living**
- Autumn 2004 - House Pietersen
- Food & Home**
- February 2005 - Toll Plaza N4
 - September 2005 - House Mathews (3)
- Garden & Home**
- January 1998 - House Louw
 - December 1998 - House Mathews (2)
 - June 1999 - House Nieuwoudt
 - October 1999 - Pull out plan (1) and Starter House
 - January 2000 - Summit House - swimming pool
 - March 2000 - House Sheard
 - July 2001 - House Muller bathroom
 - August 2001 - Garden & Home Decorex stand



- October 2002 - Interior make-over
- November 2002 - House Sheard
- February 2005 - House Bothma
- February 2005 - Pull-out plan (2)
- 2005 - House van der Westhuizen, Woodhill
- 2005 - House Meintjies, Silverlakes
- 2006 - September pull-out (3) plan holiday house
- April 2007 - Profile on Pieter J Mathews
- April 2009 - House Pelsers, Featherbrook Estate Krugersdorp
- Desember 2010 House Roos, Southdowns Irene
- July 2012 Kitchen design
- March 2014 Courting Country - House Uys
- July 2015 Close to Nature - House Kleu
- September 2016- A Plan for life, invited to design the 70th birthday issue feature

Galvanizing Today 35

- Volume 5, issue 2 - Interview

Habitat

- July/August 1998 - Lucent Technologies office interior

Home Owner

- November/December 2004 - Bondsure, House Willmans
- May/June 2005 - Kitchen, House Meintjies
- August 2009 House du Toit
- October 2009 House Malic
- March 2010 Fusion Boutique Hotel
- June 2012 House Pelsers
- June 2016 House Oosthuizen

House & Leisure

- March 1998 - House Louw
- January 1999 - Building on a budget
- March 1999 - House Mathews (2)
- September 1999 - House Combrink
- May 2000 - House Crabtree
- July 2000 - House Smit
- July 2001 - House Clacey
- April 2002 - House Muller
- April 2002 - House Pelsers
- July 2010 - House Prinsloo
- August 2010 - Kee Enterprises
- November 2010 - Interview on Pretoria
- October 2011 - SA Star Architects
- November 2012 - Nellmapius Bridge
- May 2013 - House Fouche
- July 2013 - Affies Meisies "Breaking Ground"
- September 2014 Hoërskool Waterkloof "Trends Heads up"

INSIG

- September 2006 - Argitektuur

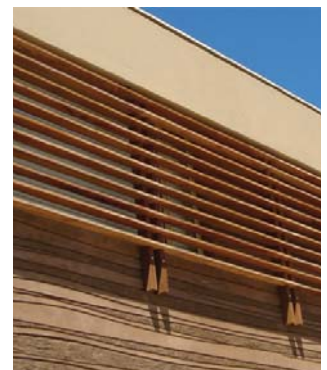
Leading Architecture

- September 2006 - House Millar, Nelspruit
- January 2008 - Profile on Pieter J Mathews

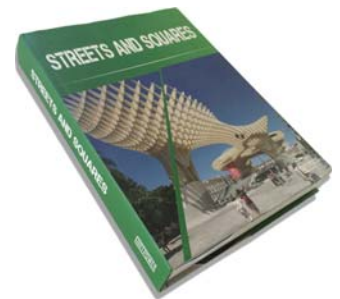
Lifestyle Choice

- Consulting Architects

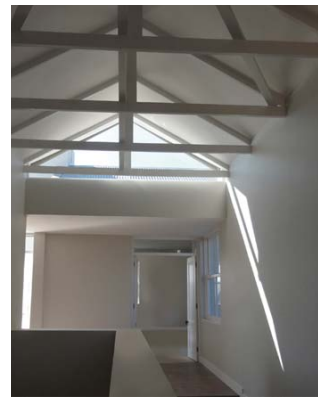
Standard Bank 2005



- Lighting Design** - November 2012 - Nellmapius Bridge
- Manwees** - September 2006 - Profile on Pieter J Mathews
- Marie Claire** - August 2022 - House Aucamp
- Men's Health** - June 1999 - Fireplaces
Men's Health Living - December 2008 - House Fenske
- My week** - 5 June 2008 - Interview with Pieter J Mathews
 - 28 August 2009 - Northern Review: Polokwane, Fusion Boutique Hotel
- One Hundred Buildings: Ten Years of Democracy** - Baobab Tollgate 2009
 - Diamond Hill Tollgate 2009
- Pretoria News** - 1 February 2007 - Tollplazas designed with pizzazz
 - 14 January 2011 - Fusion Boutique Hotel Polokwane
 - 28 November - Affies Meisies
 - November 2014 - It's all systems go
 - Monday 2 June 2014 - Lynnwood Rd bridge to link Tuks.
 - Tuesday 7 April 2015 - Unique artworks at AREYENG stations
- Rapport Leef** - October 2002 - House van Straaten
- Record Oos** - 27 November 2009 - Tshwane Mayor unveils BRT
- Rooi Rose** - 20 Januarie 1999 - Farmhouse Heidelberg
 - 28 April 1999 - House Slabbert
 - 10 November 1999 - House Mathews (2)
 - 15 Maart 2000 - Melanie's coffee shop interior
 - House Richards, Woodhill
- SA interior Design** - October/November 1998 - Lucent Technologies office interior
 - June/July 1999 - Sunlitz hair salon, interior
 - August/September 2000 - interviews with SA's top architects
 - February/March 2002 - House Combrink
- Sarie** - House Mathews (1) and House Nieuwoudt
 - September 2002 - House Muller Woodhill
- Sarie Woon** - November 2010 - Profile on Pieter J Mathews
- Steel Construction** - House Roos, Vol. 37, 2013
 - Tshwane Rapid transit stations, Vol. 40 no. 1, 2016
- Style** - May 2001 - House Munro
 - Décor 2001 - Trendsetters
- Sunday Times Home** - 3 Feb 2013 - Interview - Pieter Mathews
 - 18 May 2014 - Interview Home Weekly - Pieter Mathews



- Top Billing Magazine**
- December 2006 - Bathroom, House Mathews
 - June 2010 - Window and Light feature
- Top Huis**
- March 2005 - House Pretorius & Richards
 - August/September 2005 - House Riana Pietersen
 - April/May 2006 - House van der Vyfer
- True Love**
- April 2009 House Legae
- Tuin Paleis**
- April/May 2004 - House Pelser
 - November 2004 - House Kruger
 - March 2006 - House Pretorius
 - December 2007 - Five Contemporary Architects
 - April 2008 - Profile and interview with Pieter J Mathews
- Tuis/ Home**
- January 2008 - Entrances
 - July 2013 - Our Architects Say
- VISI**
- Winter 2000 - Summit House
 - Spring 2002 - House Armstrong
 - Spring 2005 - House Millar, Nelspruit
 - Summer 2006 - House Nataniel and Interview: Beach houses
 - Autumn 2006 - Diamond Hill and Baobab Toll Plazas and interview on alterations
 - October 2006 - Lafarge pop-up
 - October 2010 - House Angus Taylor
 - Winter 2011 - House Oosthuizen skylight
 - August, September 2016 Venice Biennale
- VISI Colour 2005/6**
- September 2005 - Various Houses
 - September 2007 - House Nieuwoudt and a view on Colour
 - 2009 - Interview with Pieter Mathews
- Volksblad**
- 10 Junie 2006 - Bekendes se huise





INTERNATIONAL PUBLICATIONS

- Greece Marie Claire Living - DEMBPIO 2001 (December 2001) - House Crab tree
- France Maison (i.e Journal de la) - October 2001 - House Combrink
- Architectural Highlights Beijing 2010 - House Millar 2010, Nelspruit
- KEE Enterprises 2010, Pretoria
- House Taylor 2010, Pretoria
- Grand Designs UK Atlas - House Prinsloo December 2009, Pretoria
- Phaidon Allas Electronic UK - AHMP Hall
- BAOBAB tollgate
- House Fouche
- Traces of Centuries + Future Steps - Nellmapius bridge, sponsored by SANRAL
- Venice Biennale Italy 2012
- 2013 World Architecture Madison, Hong Kong - Kee Enterprises office building
- 2012 Streets and Squares Art Power, Shenzhen China - Urban Maze, Lafarge
- 2014 Architecture Guide South Africa. DOM Publishers Berlin. Germany - Tshwane Rapid Transit Memory Box Station
- 2016 LaBiennale Venezia - Reporting from the front official catalogue
Cool Capital Project
- 2016 Gaurdian UK - Pieter Mathews - The Alternative City Guide to Pretoria





- Dulux Colour Awards 2002 – Finalist – House Nixon
- Merit Award Mpumalanga Institute Of Architects – House Millar, Nelspruit 2005
- Merit Award Pretoria Institute for Architects – N4 Diamond Hill Toll Plaza , Pretoria 2005, in association with K Thomashoff
- Presidents Award PIA – Architecture 2005
- Limpopo Institute of Architects – Baobab Toll Plaza 2005
- Overall Winner 2005 – South African Institute for Steel Construction
- Selected for Exhibition Miami + Beach Biennial in 2005, Florida, USA – House Millar, House Mathews and House Clacey
- South African Institute of Architects Merit Award 2006 – House Millar
- South African Institute of Architects Merit Award 2006 – Diamond Hill Tollgate
- South African Institute of Architects Merit Award 2006 – Baobab Tollgate
- PIA Peers Award 2009 First Place – KEE Enterprises
- PIA Honourable Mention 2009 – KEE Enterprises
- City of Tshwane BRT national competition: winners of 2 of the 4 station types where 18 prominent architect firms were invited by SANRAL nationally. Only the Memory Box station type was built.
- Architecture received excellent reviews in more than 28 publications and newspapers including Image & Text: Habitat, Business Day, Femina, People, Interior Design, Style, Noordwester, Designing Ways, Garden & Home, Rapport Leef, Beeld: Tshwane, Beeld Plus, Sunday Times, Finansies & Tegniek, House & Leisure, DEKAT, Visi, Star, Pretoria News Interval, Conde Nast: House & Garden, Walls & Roofs, Leading Architecture, Flooring Guide, Home Owner, Tuin Paleis, Tuis en Top Huis.
- PIA Commendation 2011 - Contemporary Capital - An Architectural Journal
- PIA Commendation 2011 - House Oosthuizen
- PIA Commendation 2011 - House Taylor
- Limpopo Institute for Architecture Commendation 2011 - Fusion Boutique Hotel
- Merit Award 2013 Pretoria Institute for Architecture - House Fouche
- Merit Award 2013 Pretoria Institute for Architecture - EC Steijn Hall - Afrikaanse Hoër Meisieskool Pretoria
- PIA Commendation 2013 - AHMP Sport Clubhouse
- PIA Commendation 2013 - Nellmapius Bridge Facade
- PIA Commendation 2015 - For the Nana Sita TRT Station
- BASA (Business art South Africa) 2015 - Innovation award for Cool Capital public benches project
- Loerie Ubuntu award Finalist 2015
- BASA (Business Art South Africa) 2016 finalist in small business category (Cool Capital Documentation)



contact details

POSTAL ADDRESS

PO Box 2676
Brooklyn Square 0075
Pretoria
0145
Republic of South Africa

Tel: 086 111 6222
From outside South Africa: +27 12 346 0772

Fax: +27 12 346 0835

Pieter Mathews: 083 255 9622
From outside South Africa: +27 83 255 9622

E-mail: admin@maaa.co.za

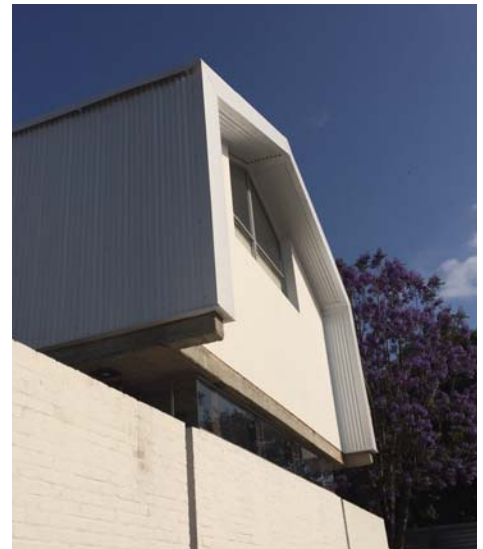
Enquiries: admin@maaa.co.za

Individual e-mails:
pieter@maaa.co.za
liam@maaa.co.za
anton@maaa.co.za
admin@maaa.co.za

PHYSICAL ADDRESS

40 Oaktree Avenue
Hazelwood
0081
Pretoria
Republic of South Africa

GPS coordinates S 25 46.133 E 28 14.043



DATE UPDATED: JANUARY 2017

www.maaa.co.za