

Oaktree Studio

Hazelwood, Pretoria, Gauteng

Architects: **Mathews & Associates Architects**
Project Team: **Pieter Mathews, Anton Smit**
Contractors: **Tundwe Konstruksie**
Structural Engineers: **Ellis Structural and Civil Engineers**
Interior: **Jacques Smit Design Consultancy**
Text: **Pieter Mathews**

25° 46'37.5"S
28° 15'30.6"E

The project in Oaktree Avenue consists of additions and alterations to create a mixed-use typology, and functions as a studio and residential space where one can live, work and play.

The aim of the project was to make the building adaptable and versatile for multiple future possibilities, while keeping costs low and reusing or reinventing materials wherever possible. A design requirement was that it should be easy to transform in the future without much 'wet work' intervention, and had to fit in with the fast-changing land use of the neighbourhood.

The existing ground-floor plan was retained and the residential and studio spaces were separated. The studio form on the first floor was treated as a typological archetypal 'Monopoly house' detached from, and floating above, the old existing house. To accentuate the concept of the floating Monopoly house, the first floor was designed to be wider than the ground floor. This gave the first floor extra cover, allowing large sliding doors to be left open in most weather conditions to create a generous connection to the outside and the three courtyard spaces.

Materials were selected to suit the aim of the design, keep costs low and ensure accessibility and ease of maintenance. Some

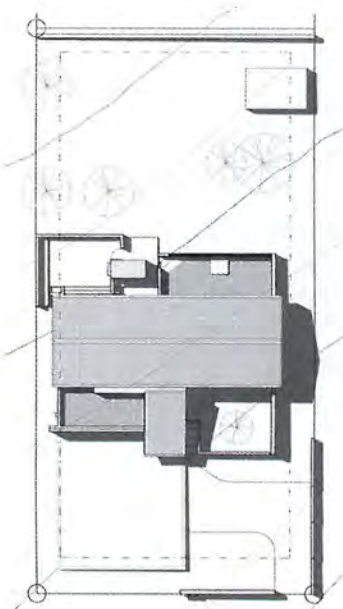
materials used were the old trusses, and discarded and test cubes.

The cheapest, most readily accessible 'Contractor's White' standard PVA was used to keep maintenance costs low. The white paint allows light flooding in from the windows to reflect and disperse in the interior studio space, limiting the need for artificial light sources.

The staircase was treated as a separate form to bring natural light into the building and make the arduous journey up and down memorable. Standard unshaven planks were used as treads with only the rough unfinished concrete risers painted a dark colour to recede from the white walls.

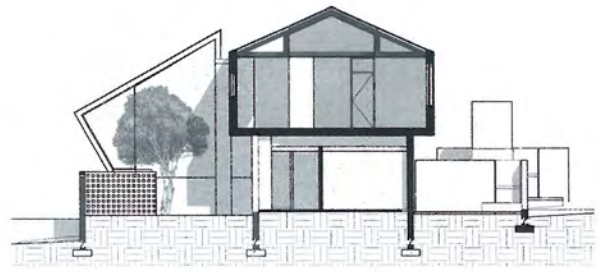
Beton brut off-shutter ceilings were used on the first floor. The slab soffits were transformed into unique works of art by installing laser off-cuts with the off-shutter formwork. The roof trusses were reused as cladding on the façade to distinguish the old from the new and the ground floor from the first floor.

The garden spaces are low maintenance and planted with water conservancy in mind. All plants were sourced from landscapers discarding plant material. Two terraces were built where building rubble was used as fill.

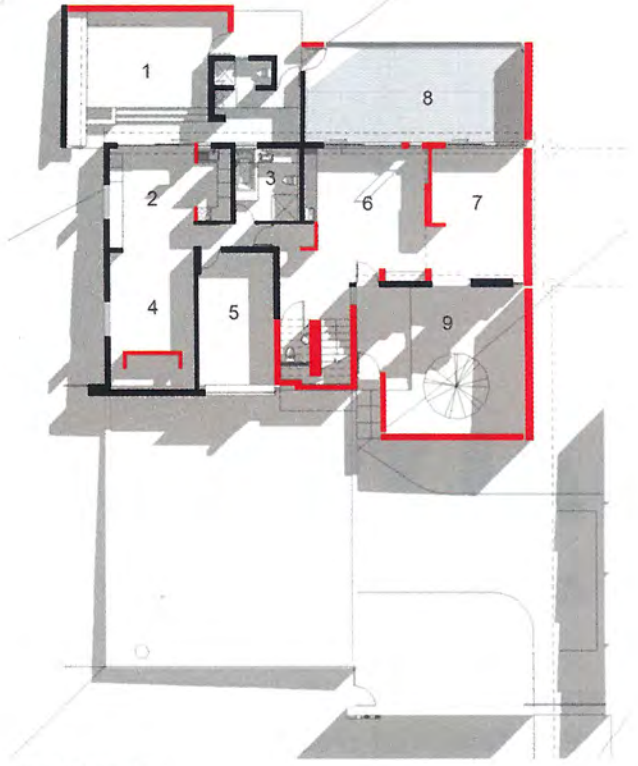


Site plan

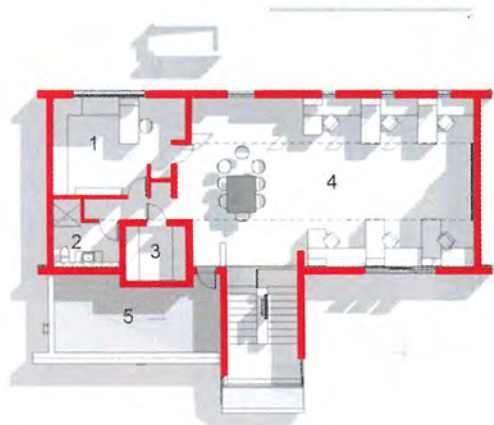




Section BB



Ground floor plan



First floor plan

Ground Floor

- 1 Open courtyard
- 2 Dining room
- 3 Bathroom
- 4 TV room
- 5 Main bedroom
- 6 Reception/guest waiting area
- 7 Boardroom
- 8 Open courtyard
- 9 Open courtyard

First Floor

- 1 Main office
- 2 Bathroom
- 3 Safe room
- 4 Design studio
- 5 Open courtyard

